

**Tapex**

"기술의 정상, 품질의 정상 **테이팩스** 테이프"

*" Top of the technology, Top of the quality - TAPEX tape "*

# COMPANY PROFILE

**Tapex**

## TOP OF QUALITY, TOP OF TECHNOLOGY



We at TAPEX, are always increasing our R&D work so that we can be loved by our customers. We have added special tape products used for special cell and semiconductor work to our strategic product line, onto which we are concentrating our core capability.

With such efforts, we are striving to become the world's best company that can make a great contribution to the progress of industry and give our customers trust and reliability.

- ☐ Established '1977
- ☐ Employee 250
- ☐ Product Adhesive Tapes  
Food packaging wraps
- ☐ Capital USD 3.5 Million
- ☐ Sales USD 57 Million ('2007)
- ☐ Subsidiary Hanon co Ltd, Uniwrap co Ltd
- ☐ Location HQ : Incheon, South Korea
- ☐ Homepage [www.tapex.co.kr](http://www.tapex.co.kr)
- ☐ Certificates ISO 9001:2000, ISO 14000  
SAMSUNG S-PARTNER  
SONY GREEN PARTNER

# HISTORIC COMPANY SINCE 1977

## FRONTIER (1977 ~ 1990)

### 1977 12 Established ("STC Chemical")

- 78 01 Completed the construction of 1st coating line
- 85 05 Completed 2nd coating line
- 86 06 Completed 1st line for PVC Food Packing Wrap
- 89 01 Completed 3rd coating line

## INDEPENDENCE (1994 ~ 2000)

### 1994 04 Separated from STC (Forest Investment, U.S.A)

### 95 10 Established R&D center

- 98 02 Certified as a Venture Company
- 03 Production of Masking Tape for electric/electronic use

### 99 01 Merged Uniwrap corporation

- 99 04 Completed 7nd coating line (Adhesive tape)

## INVESTMENT / GROWTH (2000 ~ Present)

- 2000 08 Added the 7th Adhesive Coating Machine

### 09 Started manufacturing the special tape for electric/electronic use 6,000,000m2/year

- 01 01 Certified on KSA 9001:1998 / ISO 9001:1994
- 02 07 Selected as a good company for new labor and management culture (by Ministry of Labor Affairs)
- 03 11 Certified on Environment Mark and UL
- 04 01 Certified on KSA 9001:2001 / ISO 9001:2000
- 05 10 Established 2nd Tape Factory
- 06 07 Moved New factory for Uniwrap, Added 3th Production Line
- 08 04 Under construction 2nd coating line at 2nd Tape Factory



# CORE BUSINESS

## FPD (LCD/BLU/PDP/TOUCH)

B/W LIGHT SHIELDING  
OPTICAL CLEAN ADHESIVE  
PET D/S  
CONDUCTIVE  
SILICONE TAPE FOR KEYPAD



## SECONDARY BATTERY

WIDNING TAPE  
LAMINATING TAPE  
HEAT-RESISTING TAPE  
NOMEX TAPE



## CONDENSER

WIDNING TAPE



## SEMICONDUCTOR

LEAD FRAME PLATING  
THERMAL RESIST MASKING TAPE



## PACKAGING

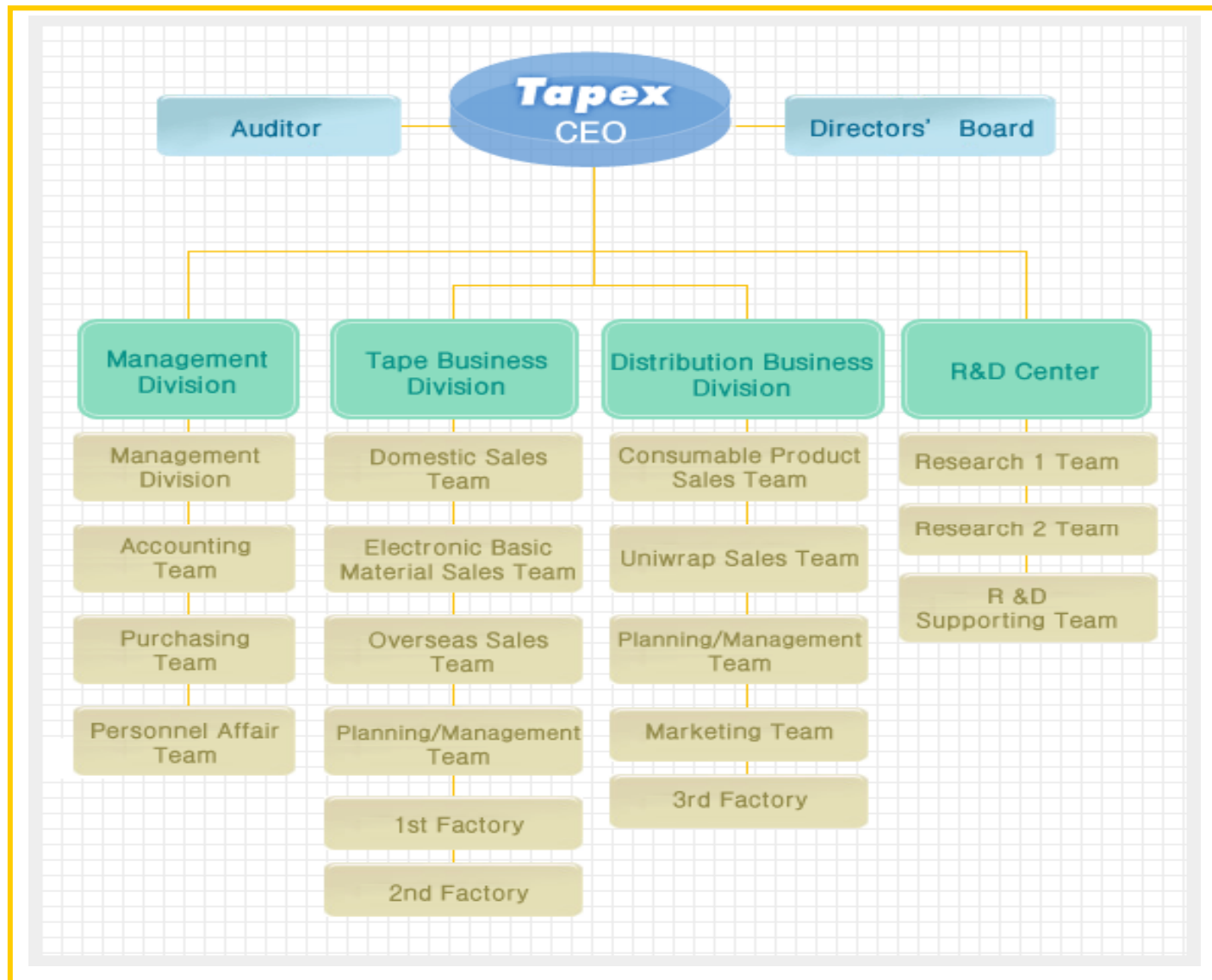
### OPTIC & ELECTRONIC

### FOOD PACKING WRAP (Uniwrap)

### CONSUMER



# ORGANIZATION



# FACTORY & BRANCH LOCATION



**HQ, 1<sup>st</sup> Factory  
INCHEON**



**UNIWRAP Factory  
HWASEOUNG**

**R&D, 2<sup>nd</sup> Factory  
HWASEOUNG**



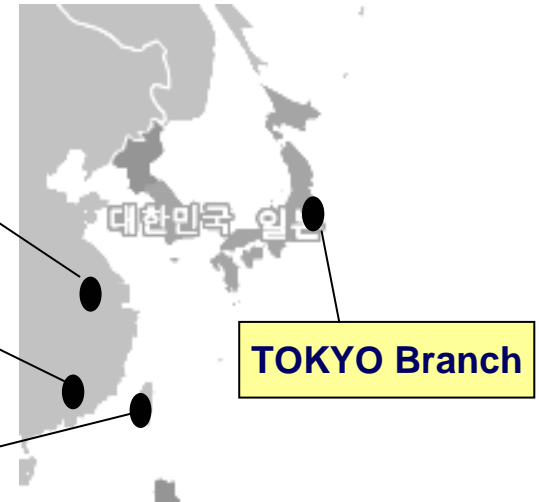
**Busan Branch**

**上海 Branch**

**深川 Branch  
(Konecs)**

**臺灣 Branch**

**TOKYO Branch**



# SALES NETWORK



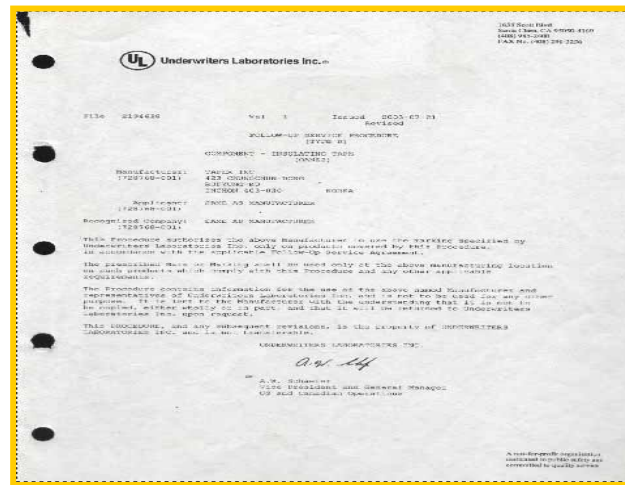
**Domestic - SAMSUNG, LG**

**Oversea - NITTO DENKO, SONY**

## CERTIFICATION



**ISO14001**



**SAMSUNG S-PARTNER**



**SONY GREEN PARTNER**

# TAPEX'S STRONG POINT



# BUPYUNG PLANT



# HWASUNG PLANT



# HWASUNG PLANT

Coating Room



# HWASUNG PLANT

Slitting Room



# HWASUNG PLANT

Aging Room



# HWASUNG PLANT

Warehouse



# HWASUNG PLANT

R&D Center



# HWASUNG PLANT

R&D Center



# WRAP FACTORY



**CUSTOMERS, VISION AND FUTURE FOR TAPEX  
THANK YOU !**

